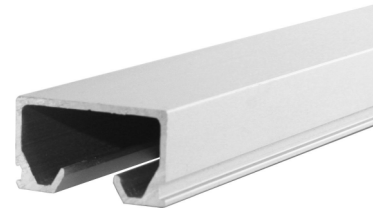
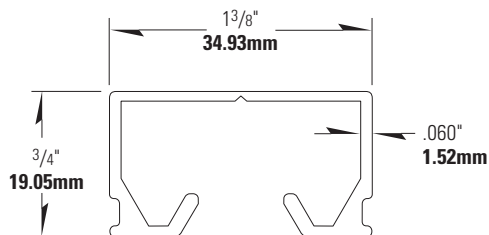


InPro Optitrac Cubicle Track



Product
Guide ①



- ① Quiet, effortless movement
- ① Extruded aluminum track with durable clear anodized aluminum or white baked acrylic enamel finish
- ① Removable end cap for quick and easy carrier replacement without removing entire track.
- ① Engineered to meet the most common track specifications.
- ① Color-matched splices, end caps and bends available for quick on-site installation
- ① Manufactured in 7' (2.1m), 8' (2.44m), 9' (2.74m), 12' (3.66m) or 16' (4.88m) lengths to accommodate any application

IPC.521/REV.3

Optitrac

Suggested Specifications

PART 1 - GENERAL

1.01 SUMMARY

- A. Cubicle Tracking Systems

1.02 SECTION INCLUDES

- A. Overhead metal curtain track
- B. Track accessories

1.03 SUBMITTALS

- A. Product Data: Manufacturer's printed product data for each type of cubicle tracking system specified.
- B. Detail Drawings: Mounting details with the appropriate fasteners for specific project substrates.
- C. Samples: Verification samples of cubicle track, 4" (102mm) long, in full size, with carriers and end cap.
- D. Manufacturer's Installation Instruction: Printed installation instructions for each cubicle tracking system.

1.04 DELIVERY, STORAGE AND HANDLING

- A. Deliver materials in unopened factory packaging to the jobsite.
- B. Inspect materials at delivery to assure that specified products have been received.
- C. Store in original packaging in a climate controlled location away from direct sunlight.

1.05 PROJECT CONDITIONS

- A. Environmental Requirements: Products must be installed in an interior climate controlled environment.

1.06 WARRANTY

- A. Standard Clickeze Limited Lifetime Warranty against material and manufacturing defects.

PART 2 - PRODUCTS

2.01 MANUFACTURER

- A. Acceptable Manufacturer: Clickeze, InPro Corporation, PO Box 406 Muskego, WI 53150 USA; Telephone: 800.222.5556, Fax: 888.715.8407, www.inprocorp.com
- B. Substitutions: Not permitted
- C. Provide all cubicle tracking systems from a single source.

2.02 TRACK MATERIALS

- A. Cubicle Tracking System

1. OPTITRAC, extruded aluminum cubicle track with clear anodized aluminum or white baked acrylic enamel finish. Aluminum shall be 6063-T5. Dimensions: height 3/4" (19.05mm), width 1 3/8" (34.93mm).

- a. White baked acrylic enamel finish
 - CE500007 - 7 foot length (2.1m)
 - CE500008 - 8 foot length (2.44m)
 - CE500009 - 9 foot length (2.74m)
 - CE500012 - 12 foot length (3.66m)
 - CE500016 - 16 foot length (4.88m)
 - b. Clear anodized finish
 - CE500007-AN - 7 foot length (2.1m)
 - CE500008-AN - 8 foot length (2.44m)
 - CE500009-AN - 9 foot length (2.74m)
 - CE500012-AN - 12 foot length (3.66m)
 - CE500016-AN - 16 foot length (4.88m)
2. Bent sections: Provide factory bent track sections with one-foot radii to mate with straight track sections:
 - a. White baked acrylic finish
 - CE5042 - 2' x 2', 45° bend
 - CE5092 - 2' x 2', 90° bend
 - CE5093 - 3' x 3', 90° bend
 - CE5094 - 4' x 4', 90° bend.
 - CE50954 - 54" radius, 7' arc length
 - b. Clear anodized finish
 - CE5042-AN - 2' x 2', 45° bend
 - CE5092-AN - 2' x 2', 90° bend
 - CE5093-AN - 3' x 3', 90° bend
 - CE5094-AN - 4' x 4', 90° bend.
 - CE50954-AN - 54" radius, 7' arc length

2.03 TRACK COMPONENTS

- A. End Cap: Provide thermoplastic end caps in a color matching the track.
 - CE5080 End Cap, white
 - CE5080-AN - End Cap, gray
- B. Carrier Removal End Cap: Provide thermoplastic end caps that allow carrier removal without the disassembly of track sections. End cap shall have a removable inner cap that allows carriers to be removed.
 - CE5100 Carrier Removal End Cap, white
 - CE5100-AN, carrier removable end cap, gray
- C. Track Splice: Provide track splice to fit track section, with finish matching that of the track.
 - CE5050 - Track Splice, white
 - CE5050-AN - Track Splice, anodized
- D. Curtain Carriers: Provide carriers with non-binding nylon roller to accurately fit track. Carriers to be fitted to curtain to prevent accidental curtain removal. 2.2 carriers per lineal foot of track length, plus one extra carrier.
 - CE5038 Ball and Chain Carrier

- E. Psychiatric Care Curtain Carriers: Provide non-binding carrier of self-lubricating Acetal, fitted to curtain with "pop-out hanger" for safety. 2.2 carriers per lineal foot of track length.
 - CE6026 Pop-out Carrier
- F. Wands: Provide wand to move curtain along the track.
 - CE9224: Adjustable Chain Wand 24" (609mm)
 - CE100702: Drapery Wand 33"
 - CE100679: Drapery Wand 36"
 - CE100698: Drapery Wand 48"
- G. Tie Backs: Provide curtain tie back to hold curtain back.
 - CE9251 - Curtain Tie Back - 48" (1.22m) long chain
 - Fabric Tie Back - 3" x 18", 3/4" white velcro each end.

PART 3 - EXECUTION

3.01 EXAMINATION

- A. Examine areas and conditions in which the cubicle tracking systems will be installed.
 1. Complete all finishing operations, including painting, before beginning installation of cubicle tracking system materials.
 2. Verify that surfaces and above ceiling supports are ready to receive work.

3.02 PREPARATION

- A. General: Prior to installation, clean substrate to remove dust, debris and loose particles.

3.03 INSTALLATION

- A. General: Locate the cubicle track as indicated on the approved detail drawing for the appropriate substrate and in compliance with the Clickeze installation instructions.
- B. Installation of Optitrac Cubicle Tracking System:
 1. Install cubicle track, secure and rigid, and true to ceiling line.
 2. Install end cap.
 3. Secure track to ceiling system. Install with mechanical fasteners.
 4. Slide carriers onto the track.
 5. Install curtains on carriers ensuring smooth operation.

3.04 CLEANING

- A. At completion of the installation, remove any debris and clean surfaces in accordance with the Clickeze clean up and maintenance instructions.

P.O. Box 406 · Muskego, Wisconsin 53150 USA

inprocorp.com

Nationwide 800.222.5556/Fax 888.715.8407

International Sales 262.679.5521 / Fax 262.679.5524